



thermohouse

the energy saver



www.thermohouse.ie

certification

Thermohouse building system is the highest quality ICF (insulated concrete formwork) available in Europe today. Thermohouse has received European Technical Approval (No. ETA-07/0018) together with Irish Agrément Board Certification (080310).

With a proven track record and full product certification, both the builder and home owner can be assured of a superior finished house.



Why Thermohouse is Great for you!

Greater Energy Rating (BER)

Thermohouse can achieve an “A” Standard Building rating which is the highest performance rating today.

Greater Reductions on heating bills

Up to 70% savings on heating bills against traditional builds and Timber frame.

Greater Sound Insulation

Up to 50% more sound reduction between rooms than a timber frame house.

Greater Fire Safety

Increased fire protection against fire with greater fire resistance.

Greater Durability

Long lasting maintenance free superior structure, no rust, no rot, no leaks!

Greater Re Sale Value

Ensuring premium financial security and return on the re sale of your home.

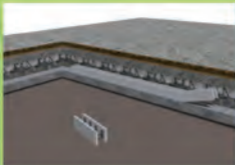
Greater Healthy indoor Environment

Eliminates condensation, mould, mildew, drafts and cold spots.

Greater Designs

Lightweight material easy to transport and install. The flexibility of the system encourages creative innovative designs with huge reductions on construction time.

Please visit our animated construction overview on
www.thermohouse.ie



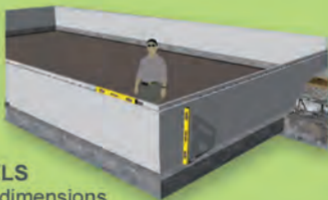
START TO BUILD

Beginning in the corner, lay elements on clean level foundation. Check overall dimensions.



CHECK LEVELS

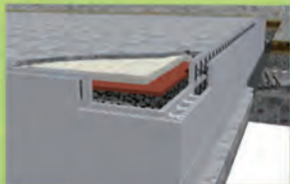
Check overall dimensions. Ensure elements are level and plumb. Complete pre-pour check list.





POURING

Using a concrete pump and small poker vibrator, pour concrete to top of elements.



UP TO SLAB

When the concrete has cured, complete construction up to the ground floor slab.





CONSTRUCT WALLS

Form window and door
opes by installing
thermohouses unique
window & door elements
at the desired location.



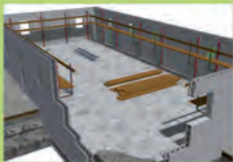
SET LINTEL MOULDS

Form lintels over windows and doors
by using Thermo House lintel elements.
(Steel reinforcement is required in all lintels)



CONTINUE TO FIRST FLOOR LEVEL

Continue installing the elements until storey height is reached. Place horizontal and vertical steel reinforcement as shown in the technical manual.



FINISH PLASTER

Use Irish Agrément Board Certified Renders which are specifically designed to provide a through coloured, weather resistant and durable solution for external rendering. A broad range of colours and finishes are available.



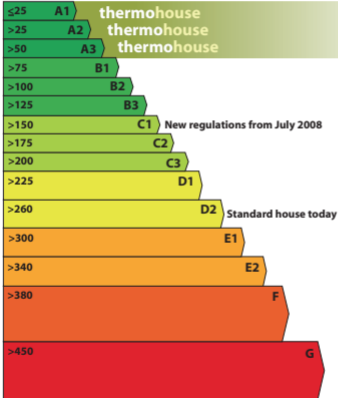
All Plasterers must be trained and certified to ensure quality of finish.

Building Energy Rating (BER)

Building Energy Rating

kWh/m²/yr

MOST EFFICIENT



LEAST EFFICIENT

Carbon Dioxide (CO₂)

Emissions Indicator

kgCO₂/m²/yr

BEST
0

WORST
>120

The less(CO₂) produced, the less the dwelling contributes to global warming.

www.thermohouse.ie

thermohouse

address:
coolcaslagh
killarney
co. kerry
ireland

enquiries:
t: +353 (0) 64 663 1307
f: +353 (0) 64 663 2394

sales direct:
sales@thermohouse.ie
www.thermohouse.ie

01904 41212 • 01904 41212 • 01904 41212